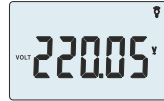
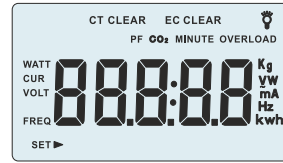
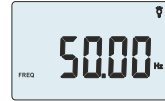


NEW!

Preliminary
Data



VOLTAGE (V)



FREQUENCY(Hz)



WATT (W)



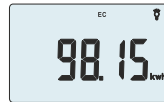
CURRENT (A)



CARBON EMISSION (CO2)



POWER FACTOR (P.F.)



TOTAL ENERGY (KWH)



TOTAL USAGE TIME (MIN)



OVERLOAD

Model: R-PG99

“MECO-G” POWERGUARD is a product which can be widely used because of its portability and light weight which makes it simple to use and easy to handle.

Measures

- * Power (W)
- * Power Factor (P.F.)
- * Current (mA)
- * Voltage (V)
- * Frequency (Hz)
- * Total Usage Time (min)
- * Total Used Energy (KWh)
- * Carbon Emission (CO2 in kg)

Features

- * Smart Three Pin International Socket
- * Large LCD Display with Backlight
- * Blinking LCD to indicate Alarm when KW is over threshold
- * Counts Co2 generated by Electrical Equipment (0.555kg Co2 is generated using 1KWh Energy)

General Specification

- * Accuracy: Class 1.0
- * Power Consumption: Less than 1W
- * Input: 230V, 50Hz
- * Working Temperature: 0°C ~ 45°C
- * Dimension: 60 x 55.7 x 120mm
- * Weight: 130.0gms (Approx.)

Functions	Input Range	Display Format
Power (W)	0.2 ~ 1W	XXX.XX W
	01 ~ 5W	
	5 ~ 2200W	
Power Factor (P.F.)	For 0.2 ~ 5W	X.XXX P.F.
	For 5 ~ 10W	
	For 10 ~ 2200W	
Current (mA)	0.02 ~ 10A	XX.XXX mA
Voltage (V)	180 ~ 260V	XXX.XX V
Frequency (Hz)	Hz	XX.XX Hz
Total Usage Time (min)	Minutes	XXXXX MIN
Total Used Energy (kWh)	For 5 ~ 2200 W	XXXXX kWh
Co2	CO2 (kg)	XXXX.X kg
Applications	This PowerGuard can be used in Houses, Schools, Offices, Shops, Laboratories etc. Teaching, Demonstration & Testing of Electrical Consumption of Household / Office appliances.	